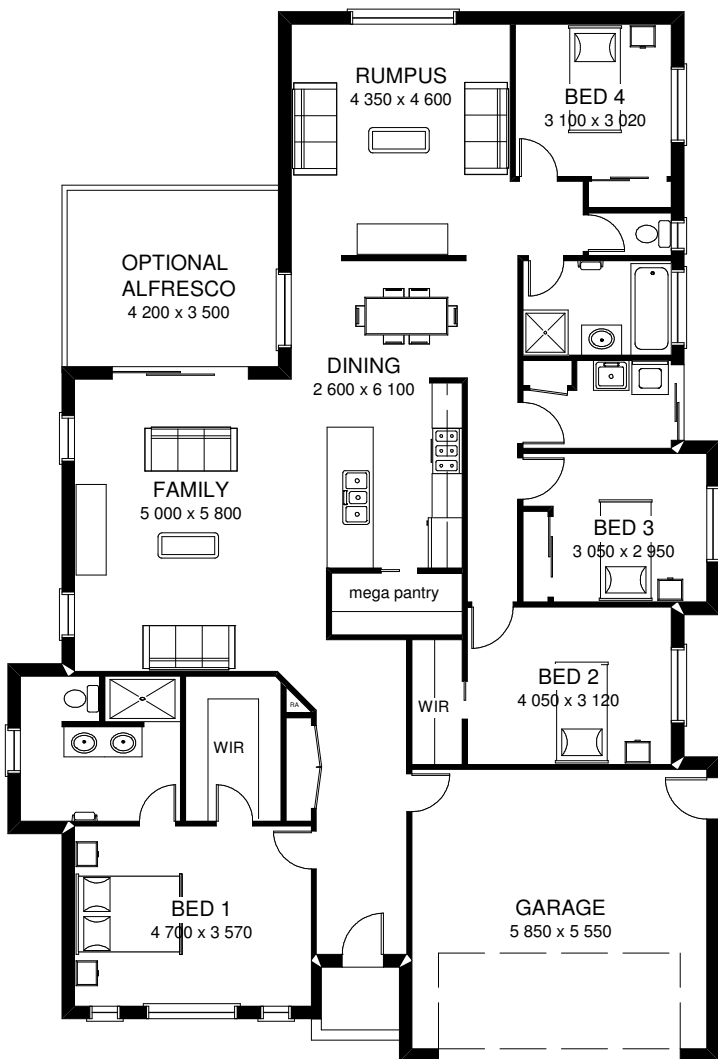


The McIvor

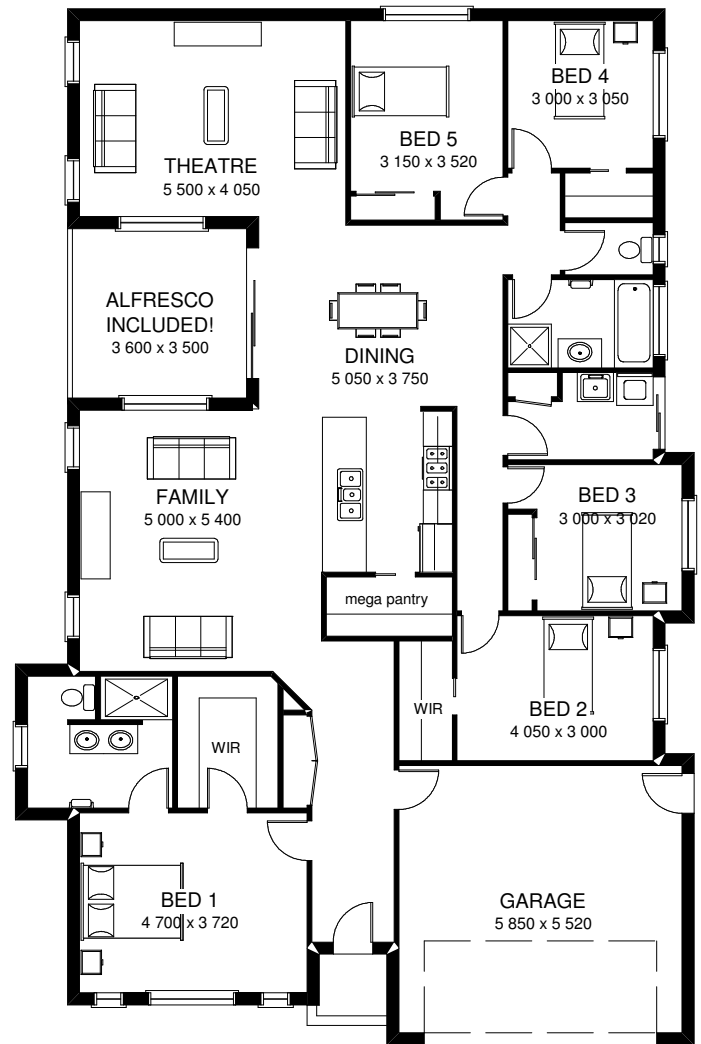
FITS 16m BLOCKS



Urban facade
Picture for illustrative purposes only
E & O E



McIvor 2	
Living area	20.8 squares
Garage area	3.8 squares
Portico	.32 squares
Width 14m	Length 20.8m
TOTAL AREA	21.7 squares



McIvor 3	
Living area	23.4 squares
Garage area	3.8 squares
Portico/alfresco	1.7 squares
Width 14m	Length 21.4m
TOTAL AREA	25.9 squares